

MONTHLY MEMBERSHIP PROGRESS REPORT

LOCATION ALBERTA

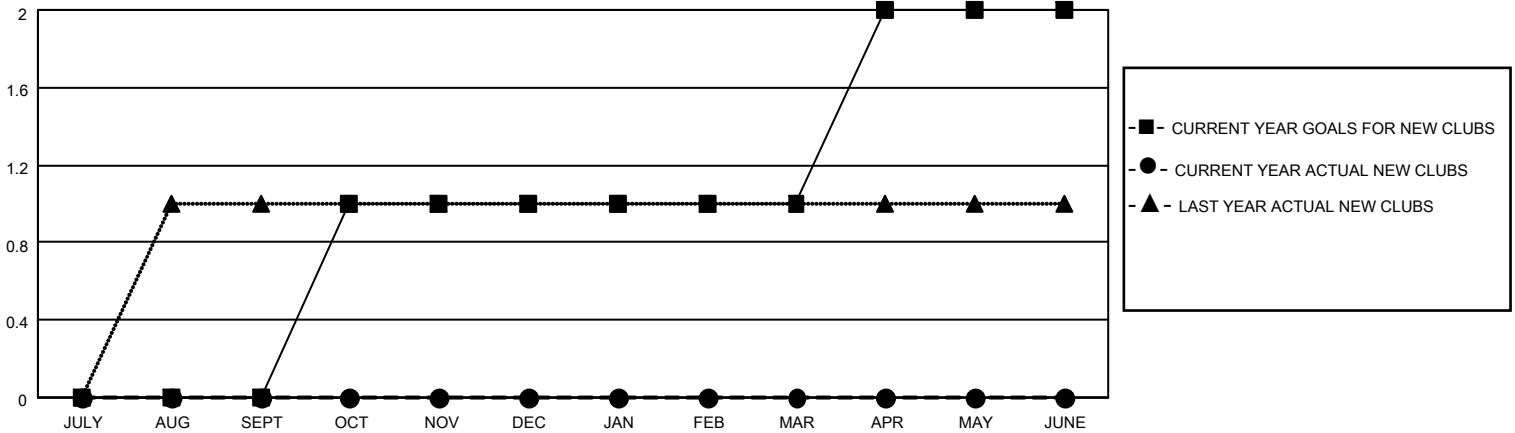
District C 1

Results as of: 2/28/2022

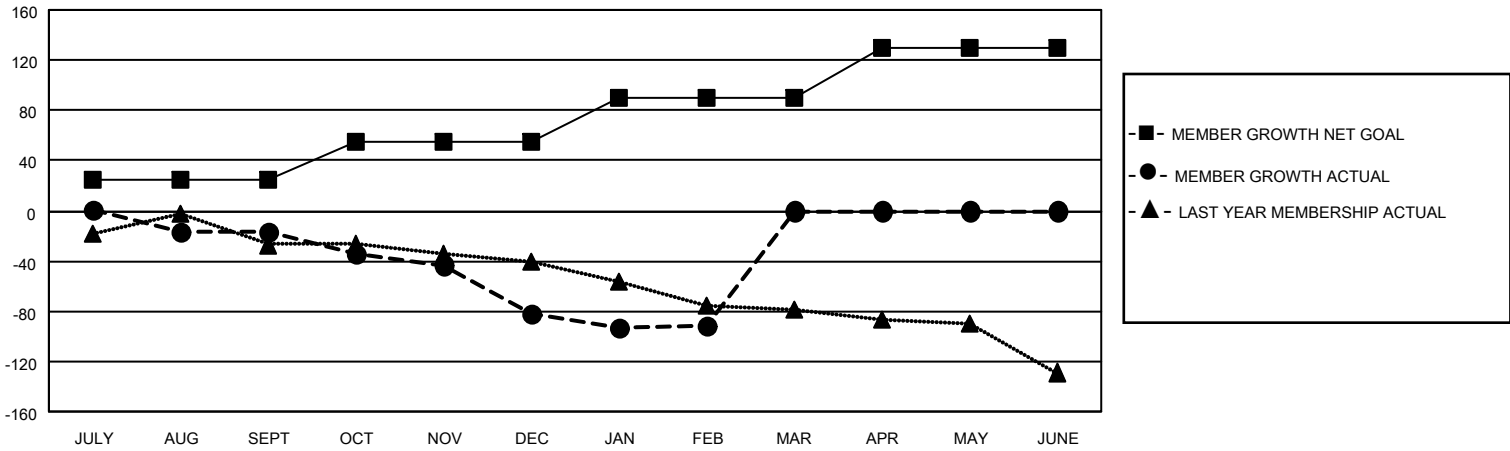
Clubs			
RESULTS FOR 2021-2022			
QUARTER	NEW CLUB GOAL	NEW CLUBS	DROPPED CLUBS
JULY/AUG/SEPT	0	0	2
OCT/NOV/DEC	1	0	2
JAN/FEB/MAR	0	0	0
APR/MAY/JUNE	1	0	0

Members			
RESULTS FOR 2021-2022			
QUARTER	MEMBER GROWTH NET GOAL	MEMBER GROWTH ACTUAL	DROPPED MEMBERS ACTUAL (including transfers)
JULY/AUG/SEPT	25	29	42
OCT/NOV/DEC	30	15	77
JAN/FEB/MAR	35	39	45
APR/MAY/JUNE	40	0	0

GOALS AND ACTUAL NEW CLUBS CUMULATIVE



GOALS AND ACTUAL MEMBERS CUMULATIVE



DROPPED CLUBS: 4

24 CLUBS OF 96 ADDED 1 OR MORE NEW MEMBERS

GENDER DISTRIBUTION

MALE	1,057 (63.33%)
FEMALE	612 (36.67%)
NON BINARY	0 (0.00%)
PREFER NOT TO ANSWER	0 (0.00%)

DROPPED MEMBERS

[CLICK HERE FOR CUMULATIVE MEMBERSHIP DATA](#)

DECEASED	21
CLUB CANCELLED	23
OTHER	120
TOTAL	164

TOTAL FAMILY UNIT MEMBERS 335

FAMILY MEMBERS PAYING HALF DUES 170